

## AGRE - ASSESSORIA E GESTÃO DE RISCO A EMPRESAS

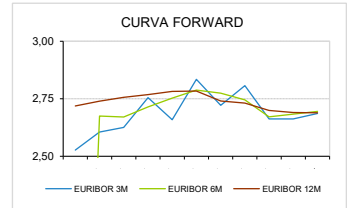
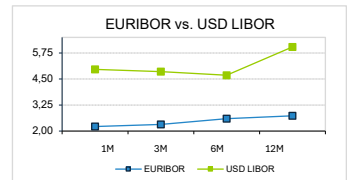
derivados.caixabi@caixabi.pt - 21 313 73 26

### RENDA FIXA

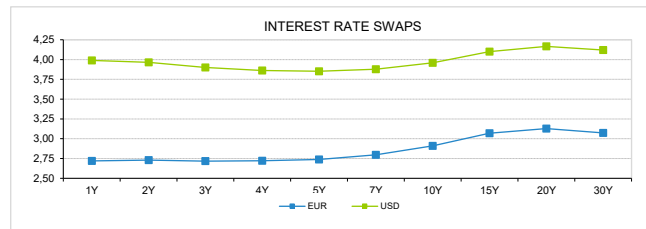
INTERBANK OFFERED RATES									
EURIBOR	FIXING	1D (bps)	1M (bps)	USD LIBOR	LAST PRICE	1D (bps)	1M (bps)	GBP	CHF
1M	2,2170	4	23	1M	4,9602	0	-35	3,7383	-0,1300
3M	2,3170	3	5	3M	4,8537	0	-42	3,7702	0,0049
6M	2,5950	0	5	6M	4,6821	-1	-45	3,8438	0,0725
12M	2,7320	-3	-7	12M	6,0414	8	31	3,9601	0,2100

INTEREST RATE SWAPS						
EUR	LAST	1D (bps)	1M (bps)	1Y	3Y	5Y
1Y	2,7190	1	3	2,7430	2,7343	2,9088
2Y	2,7304	2	2	2,7165	2,7690	2,9612
3Y	2,7170	1	1	2,7220	2,8150	3,0160
4Y	2,7215	1	-1	2,7420	2,8630	3,0650
5Y	2,7376	1	-3	2,7742	2,9130	3,1080
7Y	2,7974	0	-5	2,8530	3,0040	3,1920
10Y	2,9102	0	-6	2,9743	3,1230	3,2743
15Y	3,0691	0	-7	3,1194	3,2185	3,3022
20Y	3,1280	0	-7	3,1569	3,2107	3,2510
30Y	3,0740	0	-7	3,0816	3,0948	3,0972

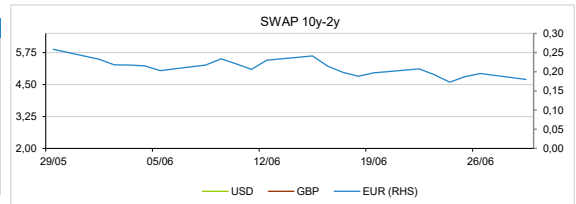
TAXA DE REFERENCIA BANCO CENTRAL	
Zona Euro	2,40
EUA	3,75
Reino Unido	3,75
Japão	1,00
Canadá	2,25
Suíça	-0,75
China	5,75
Brasil	14,25
Austrália	4,35
Índia	3,00



INTEREST RATE SWAPS				FORWARDS		
USD	LAST	1D (bps)	1M (bps)	1Y	3Y	5Y
1Y	3,9889	2	17	3,9360	3,7430	3,9190
2Y	3,9644	2	10	3,8550	3,7770	3,9640
3Y	3,8998	2	5	3,8190	3,8220	4,0060
4Y	3,8628	1	1	3,8170	3,8670	4,0490
5Y	3,8523	1	-1	3,8360	3,9090	4,0940
7Y	3,8785	1	-5	3,8920	3,9950	4,1800
10Y	3,9582	0	-8	3,9950	4,1170	4,2780
15Y	4,0993	-1	-10	4,1370	4,2240	4,3340
20Y	4,1664	-1	-11	4,1870	4,2340	4,2980
30Y	4,1199	-2	-13	4,1200	4,1220	4,1330

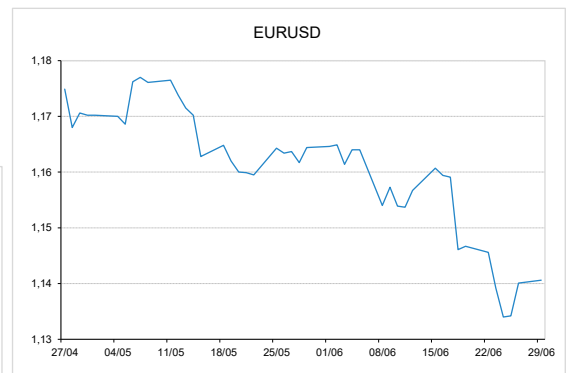
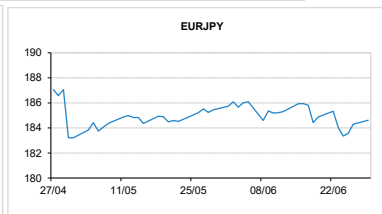
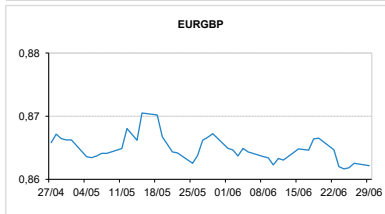


COMMODITIES	LAST	Var. 1D	Var. 1M	BONDS	YIELD	1D (bps)	1M (bps)
BRENT	72,99	1,00	-18,13	OT 2Y	2,532	0,02	-3,40
JETFUEL	912,75	-27,50	-270,75	OT 5Y	2,770	0,01	-4,10
DIESEL	894,00	-29,75	-209,50	OT 10Y	3,243	0,00	-8,20
COBRE	13.322,00	87,50	-266,00	BUND 10Y	2,821	1,00	-10,90
ZINCO	3.484,02	42,19	-50,19	SCHATZ 2Y	2,898	2,99	-3,00
OURO	4.027,38	-61,36	-512,88	T-NOTE 10Y	4,715	1,30	-4,20
TRIGO	582,25	-7,50	-41,25	T-NOTE 2Y	4,358	3,03	7,90
LICENÇA C02	79,27	-1,01	-1,36	GILT 10Y	5,354	-1,25	-13,40



### CAMBIAL

CAMBIAL	FIXING	Var. 1D	Var. 1M	FW 3M	FW 6M	FW 12M
EUR/USD	1,1406	0,04%	-2,04%	1,1450	1,1497	1,1587
EUR/GBP	0,86215	0,04%	0,59%	0,86547	0,86892	0,87552
EUR/JPY	184,620	-0,17%	0,45%	184,613	184,606	184,594
EUR/CHF	0,9230	-0,14%	-1,36%	0,9172	0,9111	0,8996
EUR/BRL	5,9203	-0,56%	-0,82%	6,0736	6,2165	6,5141
EUR/PLN	4,2883	0,05%	-1,32%	4,3050	4,3215	4,3519



### FIXINGS CONTRA USD e EUR

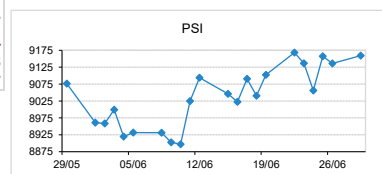
	EUR	USD	GBP	JPY	CHF	SEK	DKK	CAD	AUD	BRL	NOK
EUR	-	1,1406	0,8622	184,62	0,9230	11,1054	7,4743	1,6231	1,65932	5,9203	11,3388
USD	0,8755	-	0,7549	161,92	0,8084	9,7257	6,5439	1,4209	1,4531	5,1798	9,9237

### ACCIONISTA

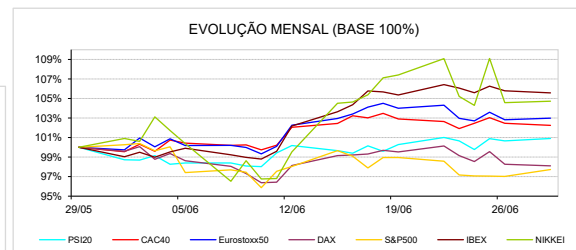
TITULO	COTAÇÃO	1D %	YTD %
ALTRI	4,785	-1,03	6,33
BCP	1,024	0,69	14,26
CORT. AMORIM	6,450	-0,31	-2,42
CTT	5,825	-2,02	-21,60
EDP	4,547	1,90	16,14
EDP R	13,770	1,55	14,37
GALP	18,490	0,71	26,38
IBERSOL	9,950	1,32	0,51
J MARTINS	17,400	0,93	-14,12
MOTA ENGL	4,728	-1,29	-4,45
NAVIGATOR	3,260	-4,68	3,82
NOS	5,165	-0,48	31,17
REN	3,825	0,53	18,97
SEMAPA	20,850	-1,18	-0,24
SONAE SGPS	2,055	-0,96	27,48
TEIX. DUARTE	0,544	-1,45	-14,47

### MAIORES GANHOS/PERDAS

Título	Variação %
EDP	1,90
EDP R	1,55
IBERSOL	1,32
J.MARTINS	0,93
GALP	0,71
SEMAPA	-1,18
MOTA ENGL	-1,29
TEIX. DUARTE	-1,45
CTT	-2,02
NAVIGATOR	-4,68



ÍNDICE	LAST	Var. 1D	YTD%	MAX Anual	MIN Anual
PSI	9.159,49	0,26%	10,84%	9.516,43	7.419,64
CAC40	8.367,33	-0,21%	2,67%	8.642,23	7.505,27
ESTX 50 PR	6.231,63	0,16%	7,60%	6.337,22	5.154,83
XTRA DAX	24.626,89	-0,18%	0,56%	25.507,79	21.863,81
S&P 500	7.409,21	0,72%	8,20%	7.620,90	6.174,97
IBEX 35	19.387,40	-0,20%	12,02%	19.575,30	13.855,50
NIKKEI 225	69.468,11	0,15%	38,00%	72.831,73	39.288,90



A informação mencionada é meramente indicativa e reflete o mercado pelas 16h30. As opiniões emitidas não podem ser entendidas como conselho ou recomendação para a prática de qualquer acto. A informação foi recolhida de fontes consideradas fiáveis, não se responsabilizando, no entanto, o CaixaBI por quaisquer incorreções que as mesmas possam conter. Para mais informações, contactar a Sala de Mercados